



2025 Johnson Creek Fall Tree Order

Available to Johnson Creek Residents Only

Tree Type	Size	Price	Quantity
Yard Tree (intended for planting within your private yard.)			
Arborvitae – <i>Dark Green</i>	5'	\$175	
Arborvitae – <i>Emerald Green</i>	5'	\$190	
Arborvitae – <i>Pyramidal</i>	5'	\$200	
Arborvitae – <i>Techny</i>	5'	\$235	
Arborvitae – <i>Green Giant (deer resistant)</i>	5'	\$250	
Birch – <i>Whitespire</i>	10-12' multi stem	\$250	
	1-1/2" single stem	\$250	
Crab – <i>Gladiator (bright pink flower), Red Jewel (white flower), Royal Raindrop (pinkish red Flower), Starlite (white flower)</i>	2"	\$260	
Eastern Redbud	5' multi stem	\$250	
Evergreen – <i>Black Hills Spruce, Norway Spruce, White Pine</i>	6'	\$350	
Japanese Tree Lilac Ivory Silk	6' Multi stem	\$225	
	2" Tree Form	\$310	
London Planetree	2"	\$300	
Oak – <i>Swamp White</i>	2"	\$310	
Terrace/Street or Yard Tree (may be planted near the street in the terrace or in your yard.)			
Elm – <i>Accolade, Princeton, Triumph</i>	2"	\$270	
Flowering Pear – <i>Cleveland Select</i>	2"	\$290	
Hackberry	2"	\$310	
Kentucky Coffeetree	2"	\$310	
Linden - <i>American Sentry, Greenspire, Redmond</i>	2"	\$270	
Locust - <i>Imperial, Shademaster, Skyline</i>	2"	\$270	
Maple - <i>Northwoods</i>	2"	\$270	
Maple - <i>Autumn Blaze, Fall Fiesta, Green Mountain, Norwegian Sunset, Sienna Glen, State Street</i>	2"	\$310	
Northern Catalpa	2"	\$290	
Serviceberry Autumn Brilliance	1-3/4" tree form	\$310	
Thornless Cockspur Hawthorn	1-1/2"	\$270	

--- Applicant Information ---

Name: _____ Phone: _____

Address: _____ Email: _____

Checklist for Tree Order Submission

- ☐ Make checks payable to: Village of Johnson Creek (Office Info: Tree – 100-46810 Private Pay)
- ☐ Submit completed form and payment to Village Hall (125 Depot Street) or mail to P.O. Box 238, Johnson Creek, WI 53038.
- ☐ Include a plat map of your property with the desired tree planting location clearly marked. (Example below.)
- ☐ Submit your order and payment by October 1, 2025.
- ☐ Place a visible stake at the planting location in your yard. Village Hall will contact you to confirm the staking date.

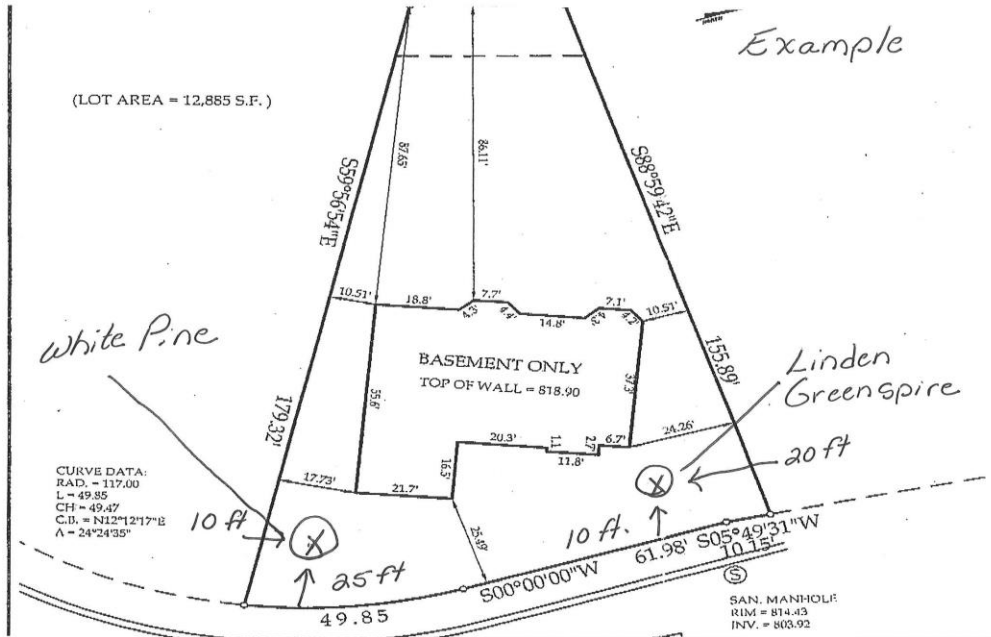
Additional Information:

Tree prices include planting and mulching. Trees are guaranteed for one year. Residents are responsible for ongoing care and watering. Tree planting expected late Fall 2025 (exact timing subject to weather and coordination).

Important Notice:

Tree planting involves the use of a Bobcat to dig and transport trees. This equipment may cause ruts or other minor lawn damage. The Village and tree service provider are not liable for any lawn damage or repairs.

Plat Map Example:



Tree Care Guidelines

Transplanting trees places stress on their root systems and may affect long-term health if not properly cared for. Please follow the guidelines below to support the successful establishment of your tree:

1. **Watering** - Provide a slow, steady trickle of water around the root ball for approximately one hour, two to three times per week until the first hard frost.
2. **Root Stimulation** - The use of a root stimulator (such as *Superthrive*) is recommended to encourage healthy root development.
3. **Mulch Maintenance** - Maintain mulch around the base of the tree for a minimum of ten years. Mulch helps retain moisture, regulate soil temperature, and suppress weeds. For best results, extend the mulch in a wide, even layer around the tree base, avoiding direct contact with the trunk.
4. **Ongoing Watering** - Transplanted trees require consistent watering, especially during the first three years. Once spring rains have diminished and dry conditions begin, provide each tree with a deep soaking (five gallons or more) every one to two weeks throughout July, August, and September, as needed.